



PEOPLE TARGETED  
**81.4 million**



REQUESTED FUNDING  
**US \$3.16 billion**



FUNDED  
**US \$0.23 billion**  
**7%**



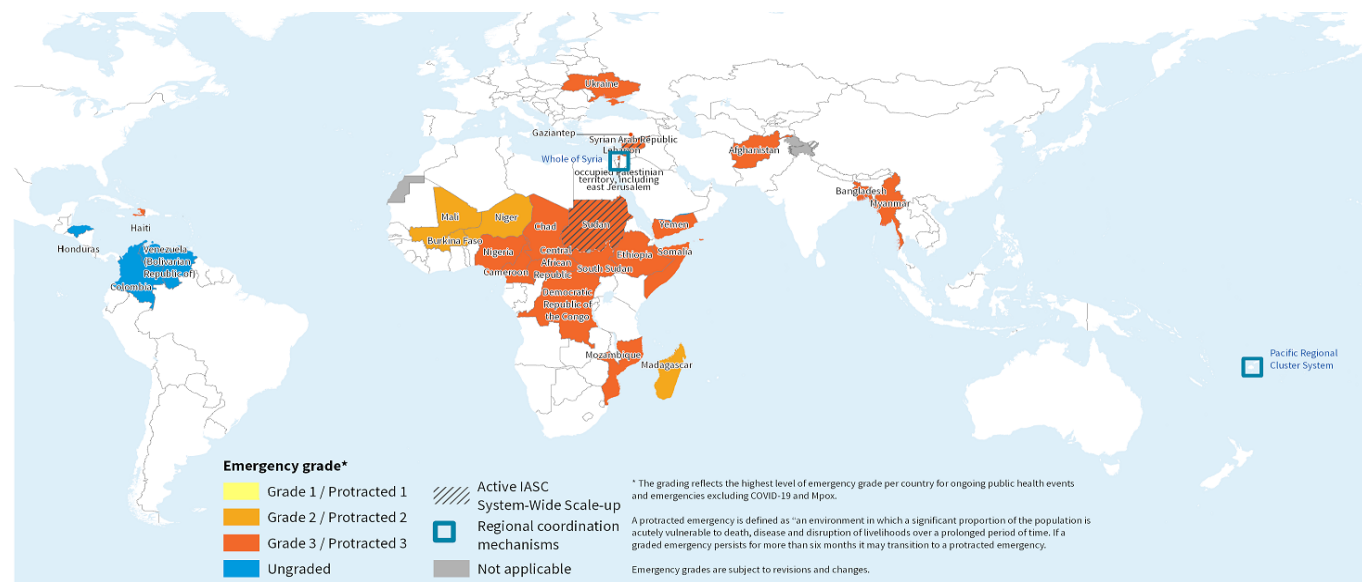
CLUSTERS/SECTORS  
**28 national**  
**2 regional**  
**119 Sub-hubs**

STAFF

**25 FT HCCs (89%)**  
**18 IMOs (64%)**

CO-COORDINATION

**4 by MoH**  
**11 by NGOS**



The designations employed and the presentation of the material in this publication do not imply the expression of any opinion whatsoever on the part of WHO concerning the legal status of any country, territory, city or area or of its authorities, or concerning the delimitation of its frontiers or boundaries. Dotted and dashed lines on maps represent approximate border lines for which there may not yet be full agreement.

Data Source: World Health Organization  
Map Production: WHO Health Emergencies Programme  
Map Date: 11 April 2025

0 1,500 3,000 Km

This dashboard includes all activated clusters and other national health emergencies coordination platforms with a 2025 Humanitarian Response Plan.

# LEGEND

**FT - Full Time**

**PT - Part Time**

**a.i. – ad interim/acting**

**INGO – International Nongovernmental Organization**

**NNGO – National Nongovernmental Organization**

**HCC – Health Cluster Coordinator**

**IMO – Information Management Officer**

**PHO – Public Health Officer**

**MOH – Ministry of Health**

## AFGHANISTAN

PROTRACTED 3



### NATIONAL TEAM 3

1 FT COORDINATOR  
 2 FT IM OFFICER  
 0 PH OFFICER

### PARTNERS: 69

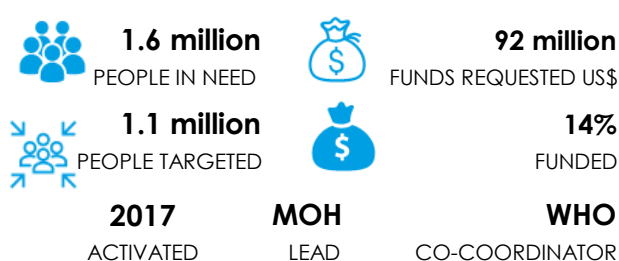
22 INGOS  
 28 NNGO  
 4 UN AGENCIES  
 1 NATIONAL AUTHORITY  
 6 DONORS  
 8 OBSERVERS

### 7 SUB-NATIONAL HUBS

Balkh, Herat, Kabul, Kandahar, Kunduz, Nangarhar, Paktia

## BANGLADESH (COX'S BAZAR)

GRADE 3



### NATIONAL TEAM 2

1 FT COORDINATOR  
 1 FT IM OFFICER  
 0 PH OFFICER

### PARTNERS: 69

14 INGOS  
 35 NNGO  
 5 UN AGENCIES  
 2 NATIONAL AUTHORITY  
 7 DONORS  
 3 OBSERVERS

### 0 SUB-NATIONAL HUBS

## BURKINA FASO

PROTRACTED 2



### NATIONAL TEAM 2

1 FT COORDINATOR  
 1 FT IM OFFICER

### PARTNERS: 48

26 INGO  
 9 NNGO  
 4 UN AGENCIES  
 1 NATIONAL AUTHORITY  
 3 DONORS  
 5 OBSERVERS

### 6 SUB-NATIONAL HUBS

Boucle du Mouhoun, Centre-Est, Centre-Nord, EST, Nord, Sahel

## CAMEROON

GRADE 3



### NATIONAL TEAM: 0

0 COORDINATOR  
 0 IMO  
 0 PH OFFICER  
 0 COMMS OFFICER

### Reach out & CBHC

### PARTNERS: 22

5 INGOS  
 12 NNGOS  
 3 UN AGENCIES  
 1 NATIONAL AUTHORITY  
 1 DONOR  
 0 Observers

### 1 SUB-NATIONAL HUB

Buea

## CENTRAL AFRICAN REPUBLIC

Grade 3



### NATIONAL TEAM: 2

1 FT COORDINATOR  
 1 FT IM OFFICER  
 0 PT PH OFFICER  
 0 COMMS OFFICER

### MVAD -NNGO

### MDA -INGO

31 INGO  
 39 NNGO  
 5 UN AGENCIES  
 1 NATIONAL AUTHORITY  
 3 DONORS  
 1 OTHER 7 OBSERVERS

### 4 SUB-NATIONAL HUBS

Bambari, Bangassou, Bria, Kaga-Bandoro

## CHAD

GRADE 3



### NATIONAL TEAM: 2

1 FT COORDINATOR  
 1 FT IM OFFICER  
 0 PH OFFICER  
 0 COMMS OFFICER

### PARTNERS: 50

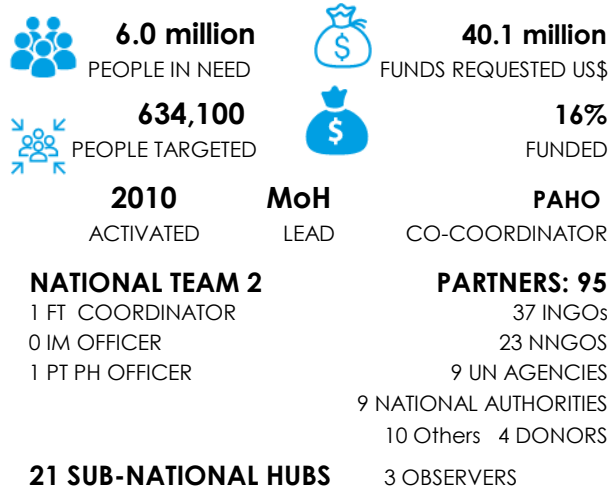
25 INGOS  
 8 NNGOS  
 6 UN AGENCIES  
 2 NATIONAL AUTHORITIES  
 5 DONORS  
 4 OBSERVERS

### 3 SUB-NATIONAL HUBS

Groupe de travail Est, Groupe de travail Sud, Sous cluster Lac

## COLOMBIA

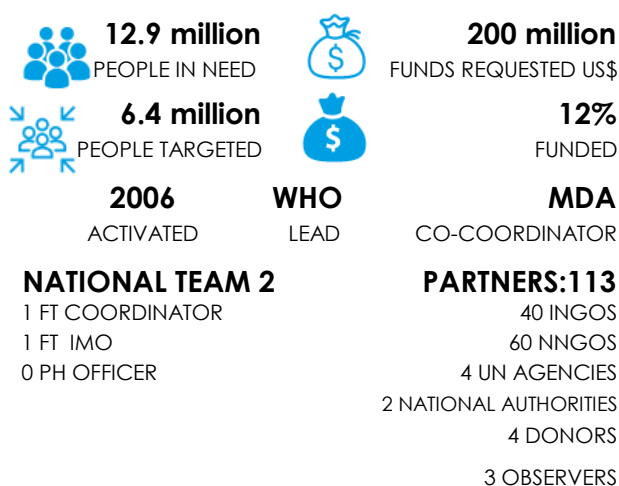
UNGRADED



Acaandí, Amazonas, Arauca, Antioquia, Bogotá, Bolívar, Cauca, Casanare, Cesar, Chocó, Guainia, La Guajira, Magdalena, Nariño, Necocli, Norte de Santander, Soacha, Putamayo, Santander, Vichada, Valle del Cauca,

## DEM. REP. OF THE CONGO

GRADE 3



### 5 SUB-NATIONAL HUBS

Ituri, Nord Kivu, Sud Kivu, Tanganyika, Relasi Maindombe

## ETHIOPIA

GRADE 3

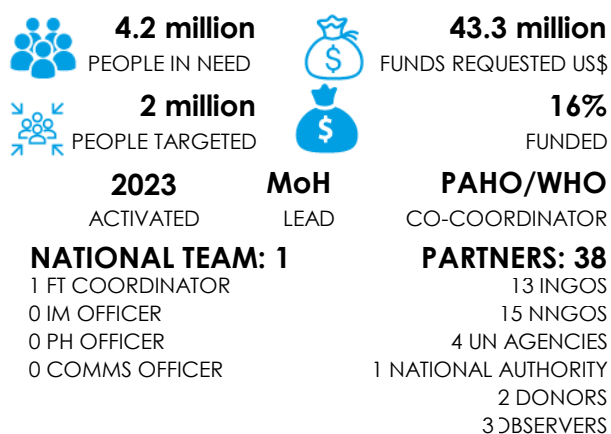


### 6 SUB-NATIONAL HUBS

Amhara, Benishangul Gumuz, Gambella, Hawasa, Oromia, Tigray,

## HAITI

GRADE 3

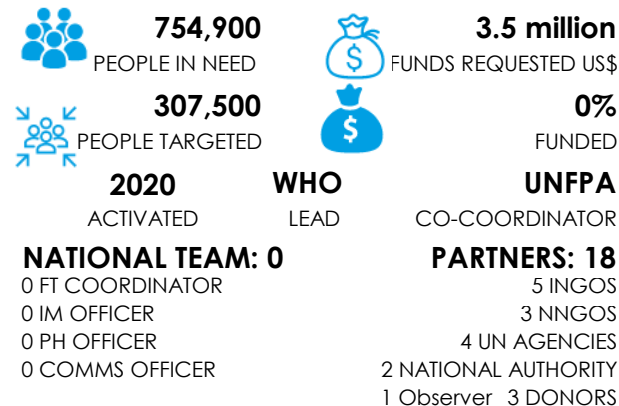


### 1 SUB NATIONAL HUBS

Artibonite & Centre

## HONDURAS

UNGRADED

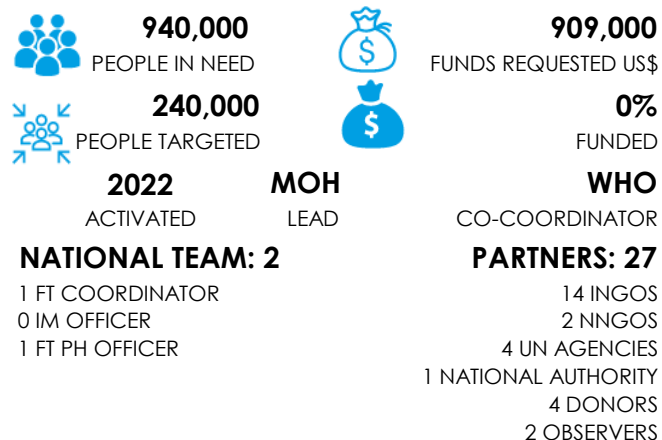


### 3 SUB-NATIONAL HUBS

Ocotepeque Sanitary Region, El Paraíso Sanitary Region, Cortés Sanitary Region

## MADAGASCAR

























PROTRACTED 2



### 2 SUB-NATIONAL HUBS

Grand Nord, ,Grand Sud



| MALI  |  |   | MOZAMBIQUE                                  |   |                                       | MYANMAR   |   |   |                                       |   |  |
|---|--|---|---|---|---------------------------------------|---|---|---|---------------------------------------|---|--|
| PROTRACTED 2  |  |   | GRADE 3                                     |   |                                       | PROTRACTED 3  |   |   |                                       |   |  |
|  | <b>3.7 million</b><br>PEOPLE IN NEED   |  | <b>43 million</b><br>FUNDS REQUESTED US\$   |  | <b>778,000</b><br>PEOPLE IN NEED      |  | <b>26.7 million</b><br>FUNDS REQUESTED US\$ |  | <b>12.8 million</b><br>PEOPLE IN NEED |  | <b>123 million</b><br>FUNDS REQUESTED US\$ |
|  | <b>2.45 million</b><br>PEOPLE TARGETED |  | <b>6%</b><br>FUNDED                         |  | <b>743,000</b><br>PEOPLE TARGETED     |  | <b>35%</b><br>FUNDED                        |  | <b>2.4 million</b><br>PEOPLE TARGETED |  | <b>1%</b><br>FUNDED                        |
| <b>2012</b><br>ACTIVATED  | <b>WHO</b><br>LEAD                     | <b>AMCP-SP/ALIMA</b><br>CO-COORDINATOR  | <b>2019</b><br>ACTIVATED                    | <b>WHO</b><br>LEAD  | <b>CO-COORDINATOR</b>                 | <b>2012</b><br>ACTIVATED  | <b>WHO</b><br>LEAD                          | <b>-</b><br>CO-COORDINATOR  |                                       |   |  |
| <b>NATIONAL TEAM: 3</b>   |  |   | <b>NATIONAL TEAM: 1</b>                     |   |                                       | <b>NATIONAL TEAM: 5</b>   |   |   | <b>NATIONAL TEAM: 96</b>              |   |  |
| 1 FT COORDINATOR  |  |   | 0 COORDINATOR                               |   |                                       | 8 INGOS   |   |   | 32 INGOS                              |   |  |
| 1 FT IM OFFICER   |  |   | 1 PT IM OFFICER                             |   |                                       | 3 NNGOS   |   |   | 36 NNGOS                              |   |  |
| 0 PH OFFICER  |  |   | 0 PH OFFICER                                |   |                                       | 5 UN AGENCIES   |   |   | 9 UN AGENCIES                         |   |  |
| 1 PT COMMS OFFICER  |  |   | 0 COMMS OFFICER                             |   |                                       | 1 NATIONAL AUTHORITY  |   |   | 0 NATIONAL AUTHORITIES                |   |  |
|   |  |   |   |   |                                       | 2 DONORS  |   |   | 13 DONORS                             |   |  |
|   |  |   |   |   |                                       | 2 OBSERVERS   |   |   | 6 OBSERVERS                           |   |  |
| <b>6 SUB-NATIONAL HUBS</b>  |  |   | <b>1 SUB-NATIONAL HUB</b>                   |   |                                       | <b>4 SUB-NATIONAL HUBS</b>  |   |   |                                       |   |  |
| Gao, Kidal, Menaka, Mopti, Segou, Tombouctou                                      |  |   | Pemba                                       |   |                                       | Northeast, Northwest, Rakhine and Southern Chin, Southeast                          |   |   |                                       |   |  |
|   |  |   |   |   |                                       |   |   |   |                                       |   |  |
| NIGER   |  |   | NORTH EAST NIGERIA                          |   |                                       | OCCUPIED PALESTINIAN TERRITORY  |   |   |                                       |   |  |
| PROTRACTED 2  |  |   | GRADE 3                                     |   |                                       | GRADE 3   |   |   |                                       |   |  |
|  | <b>1.6 million</b><br>PEOPLE IN NEED   |  | <b>36.8 million</b><br>FUNDS REQUESTED US\$ |  | <b>4.9 million</b><br>PEOPLE IN NEED  |  | <b>74.1 million</b><br>FUNDS REQUESTED US\$ |  | <b>3.3 million</b><br>PEOPLE IN NEED  |  | <b>596 million</b><br>FUNDS REQUESTED US\$ |
|  | <b>1.3 million</b><br>PEOPLE TARGETED  |  | <b>2%</b><br>FUNDED                         |  | <b>3.1 million</b><br>PEOPLE TARGETED |  | <b>2%</b><br>FUNDED                         |  | <b>2.7 million</b><br>PEOPLE TARGETED |  | <b>4%</b><br>FUNDED                        |
| <b>2010</b><br>ACTIVATED  | <b>WHO</b><br>LEAD                     | <b>WVI</b><br>CO-COORDINATOR  | <b>2016</b><br>ACTIVATED                    | <b>MoH</b><br>LEAD  | <b>WHO</b><br>CO-COORDINATOR          | <b>2009</b><br>ACTIVATED  | <b>WHO</b><br>LEAD                          | <b>4</b><br>CO-COORDINATOR  | <b>MOH</b><br>CO-COORDINATOR          |   |  |
| <b>NATIONAL TEAM: 0</b>   |  |   | <b>NATIONAL TEAM: 4</b>                     |   |                                       | <b>PARTNERS: 52</b>   |   |   | <b>NATIONAL TEAM: 4</b>               |   |  |
| 0 COORDINATOR   |  |   | 1 FT COORDINATOR                            |   |                                       | 8 INGOS   |   |   | 1 FT COORDINATOR                      |   |  |
| 0 IM OFFICER  |  |   | 1 FT IMO OFFICER                            |   |                                       | 30 NNGOS  |   |   | 3 FT IM OFFICER                       |   |  |
| 0 PH OFFICER  |  |   | 2 FT PH OFFICER                             |   |                                       | 3 UN AGENCIES   |   |   | 0 PH OFFICER                          |   |  |
| 0 COMMS OFFICER   |  |   | 0 COMMS OFFICER                             |   |                                       | 1 NATIONAL AUTHORITIES  |   |   | 0 COMMS OFFICER                       |   |  |
|   |  |   |   |   |                                       | 4 DONORS  |   |   | 1 NATIONAL AUTHORITIES                |   |  |
|   |  |   |   |   |                                       | 5 OBSERVERS   |   |   | 19 DONORS                             |   |  |
|   |  |   |   |   |                                       | 1 OTHERS  |   |   | 4 OBSERVERS                           |   |  |
| <b>4 SUB-NATIONAL HUBS</b>  |  |   | <b>2 SUB-NATIONAL HUBS</b>                  |   |                                       | <b>2 SUB-NATIONAL HUB</b>   |   |   |                                       |   |  |
| Diffa, Maradi, Tahoua, Tillabery  |  |   | Adamawa, Yobe                               |   |                                       | Gaza, The West Bank   |   |   |                                       |   |  |

## PACIFIC

### REGIONAL COORDINATION MECHANISM

**2014**

ACTIVATED

**1 REGIONAL TEAM**  
**1 FT COORDINATOR**

Supporting country-level coordination and response

The Pacific Humanitarian Team (PHT) Health & Nutrition Cluster is a regional coordination mechanism facilitated by WHO and UNICEF which engages with Ministries of Health and partners across the 21 Pacific island countries and areas (PICs) to support health emergency preparedness and response.

#### **21 PACIFIC ISLAND COUNTRIES AND AREAS (PICs):**

American Samoa, Cook Islands, Fiji, French Polynesia, Guam, Kiribati, Republic of the Marshall Islands, the Federated States of Micronesia, Narau, New Caledonia, Niue, the Commonwealth of the Northern Mariana Islands, Palau, Pitcairn Islands, Samoa, Solomon Islands, Tokelau, Tonga, Tuvalu, Vanuatu, and Wallis and Futuna.

## SOMALIA

### PROTRACTED 3



**5.4 million**

PEOPLE IN NEED



**3.8 million**

PEOPLE TARGETED



**123 million**

FUNDS REQUESTED US\$



**7%**

FUNDED

**2006**

ACTIVATED

**WHO**  
LEAD

**Save the Children**  
CO-COORDINATOR

**NATIONAL TEAM: 1**

1 FT COORDINATOR

0 IM OFFICERS

0 PH OFFICER

**PARTNERS: 59**

18 INGOS

26 NNGOS

4 UN AGENCIES

1 NATIONAL AUTHORITY

7 DONOR

2 OBSERVERS

1 Other

#### **6 SUB-NATIONAL HUBS**

Benadir, Galmudug, Hirshabelle, Jubaland, Puntland State, South West State

## SOUTH SUDAN

### PROTRACTED 3



**5.6 million**

PEOPLE IN NEED



**3 million**

PEOPLE TARGETED



**119 million**

FUNDS REQUESTED US\$



**8%**

FUNDED

**2010**

ACTIVATED

**WHO**  
LEAD

**Save the Children**  
CO-COORDINATOR

**NATIONAL TEAM: 3**

1 FT COORDINATOR

1 FT IM OFFICER

1 FT PH OFFICER

0 COMMS OFFICER

**PARTNERS: 104**

32 INGOS

48 NNGOS

10 UN AGENCIES

1 NATIONAL AUTHORITY

2 Others 9 DONORS

2 OBSERVERS

#### **10 SUB-NATIONAL HUBS**

Jonglei, Central Equatoria, Eastern Equatoria, Lakes, Northern Bahr el Ghazal, Unity State, Upper Nile, Warrap, Western Bahr el Ghazal, Western Equatoria

## SUDAN

### GRADE 3, LEVEL 3



**20.3 million**

PEOPLE IN NEED



**9.4 million**

PEOPLE TARGETED



**262 million**

FUNDS REQUESTED US\$



**6%**

FUNDED

**2009**

ACTIVATED

**WHO**  
LEAD

**ALIGHT**  
CO-COORDINATOR

**NATIONAL TEAM: 12**

1 FT COORDINATOR

1 PT IM OFFICER

0 FT PH OFFICER

**PARTNERS: 48**

22 INGOS

11 NNGOS

4 UN AGENCIES

1 NATIONAL AUTHORITIES

4 DONORS

#### **3 SUB-NATIONAL HUBS**

Central Sudan (Kosti), Cross Border Darfur (West Sudan/ Hub Darfur), Western Sudan (Kassala)

6 OBSERVERS

## UKRAINE

### PROTRACTED 3



**9.2 million**

PEOPLE IN NEED



**2.9 million**

PEOPLE TARGETED



**131 million**

FUNDS REQUESTED US\$



**18%**

FUNDED

**2014**

ACTIVATED

**WHO**  
LEAD

**CO-COORDINATOR**

**NATIONAL TEAM: 4**

1 FT COORDINATOR

2 FT IM OFFICER

0 PH OFFICER

1 FT COMMS OFFICER

**PARTNERS: 212**

41 INGOS

67 NNGOS

5 UN AGENCIES

4 NATIONAL AUTHORITIES

5 DONORS

2 OBSERVERS

88 OTHERS

#### **4 SUB-NATIONAL HUBS**

Dnipro, Kharkiv, Kyiv, Odessa

## VENEZUELA

### UNGRADED



**7.1 million**

PEOPLE IN NEED



**3.5 million**

PEOPLE TARGETED



**118 million**

FUNDS REQUESTED US\$



**3%**

FUNDED

**2019**

ACTIVATED

**PAHO/WHO**  
LEAD

**IMC**  
CO-COORDINATOR

**NATIONAL TEAM: 2**

1 FT COORDINATOR

1 FT IM OFFICER

0 PH OFFICER

0 COMMS OFFICER

**PARTNERS: 47**

20 INGOS

17 NNGOS

5 UN AGENCIES

0 NATIONAL AUTHORITY

2 OTHERS 1 DONOR

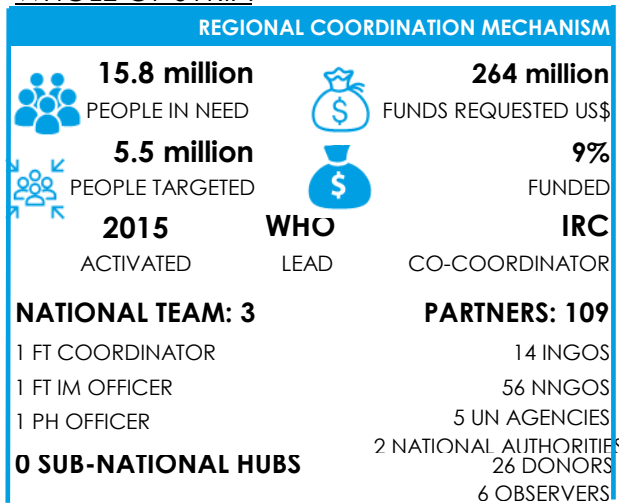
2 OBSERVERS

#### **5 SUB-NATIONAL HUBS**

Amazonas, Bolívar, Delta Amacuro, Táchira, Zulia

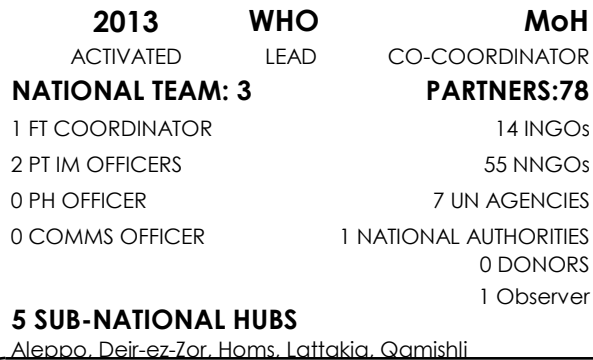


## WHOLE OF SYRIA



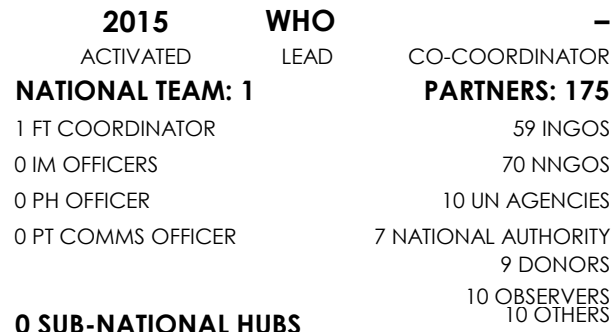
## SYRIA - DAMASCUS

PROTRACTED 3



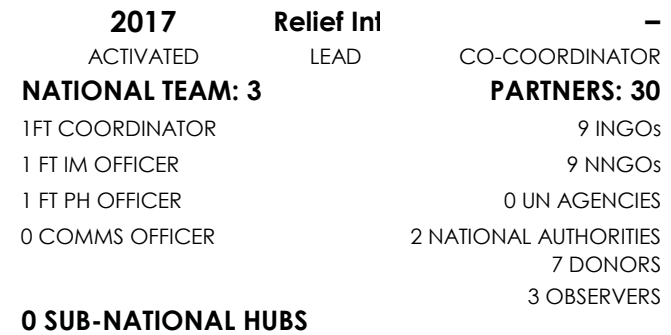
## CROSS-BORDER TURKEY

PROTRACTED 3



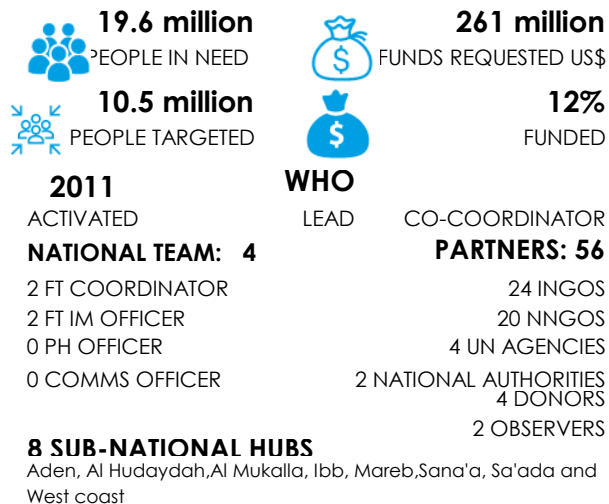
## CROSS-BORDER NORTH-EAST SYRIA

PROTRACTED 3



## YEMEN

PROTRACTED 3



## STAFF SUB-NATIONAL HUBS

### AFGHANISTAN

7 SUB-NATIONAL HUBS

|                  | COORDINATOR |    | CO-COORDINATOR |    | IM OFFICER |    |
|------------------|-------------|----|----------------|----|------------|----|
|                  | FT          | PT | FT             | PT | FT         | PT |
| <b>Kandahar</b>  | 1           | 0  | 0              | 1  | 0          | 0  |
| <b>Kundz</b>     | 1           | 0  | 0              | 0  | 0          | 0  |
| <b>Herat</b>     | 1           | 0  | 0              | 1  | 0          | 0  |
| <b>Nangarhar</b> | 1           | 0  | 0              | 1  | 0          | 0  |
| <b>Paktia</b>    | 1           | 0  | 0              | 1  | 0          | 0  |
| <b>Balkh</b>     | 1           | 0  | 0              | 0  | 0          | 0  |
| <b>Kabul</b>     | 1           | 0  | 0              | 1  | 0          | 0  |

### BURKINA FASO

6 SUB-NATIONAL HUBS

|                          | COORDINATOR |    | CO-COORDINATOR |    | IM OFFICER |    |
|--------------------------|-------------|----|----------------|----|------------|----|
|                          | FT          | PT | FT             | PT | FT         | PT |
| <b>Boucle du Mouhoun</b> | 0           | 1  | 0              | 1  | 0          | 0  |
| <b>Centre-Nord</b>       | 0           | 1  | 0              | 2  | 0          | 0  |
| <b>Est</b>               | 0           | 1  | 0              | 1  | 0          | 0  |
| <b>Nord</b>              | 0           | 1  | 0              | 1  | 0          | 0  |
| <b>Sahel</b>             | 0           | 1  | 0              | 1  | 0          | 0  |
| <b>Centre-Est</b>        | 0           | 0  | 0              | 0  | 0          | 0  |

### CAMEROON

1 SUB-NATIONAL HUB

|             | COORDINATOR |    | CO-COORDINATOR |    | IM OFFICER |    |
|-------------|-------------|----|----------------|----|------------|----|
|             | FT          | PT | FT             | PT | FT         | PT |
| <b>Buea</b> | 0           | 0  | 0              | 0  | 0          | 0  |



**CENTRAL AFRICAN REPUBLIC**

|                     | COORDINATOR |    | CO-COORDINATOR |    | IM OFFICER |    |
|---------------------|-------------|----|----------------|----|------------|----|
|                     | FT          | PT | FT             | PT | FT         | PT |
| 4 SUB-NATIONAL HUBS |             |    |                |    |            |    |
| <b>Bambari</b>      | 0           | 0  | 0              | 0  | 0          | 0  |
| <b>Bangassou</b>    | 0           | 0  | 0              | 0  | 0          | 0  |
| <b>Bria</b>         | 0           | 0  | 0              | 0  | 0          | 0  |
| <b>Kaga-Bandoro</b> | 0           | 0  | 0              | 0  | 0          | 0  |

---

**CHAD**

|                              | COORDINATOR |    | CO-COORDINATOR |    | IM OFFICER |    |
|------------------------------|-------------|----|----------------|----|------------|----|
|                              | FT          | PT | FT             | PT | FT         | PT |
| 3 SUB-NATIONAL HUBS          |             |    |                |    |            |    |
| <b>Sous Cluster Lac</b>      | 0           | 0  | 0              | 0  | 0          | 0  |
| <b>Groupe de travail Sud</b> | 0           | 0  | 0              | 0  | 0          | 0  |
| <b>Groupe de travail Est</b> | 0           | 1  | 0              | 0  | 0          | 1  |

---

**COLOMBIA**

|                           | FT | PT | FT | PT | FT | PT |
|---------------------------|----|----|----|----|----|----|
| 21 SUB-NATIONAL HUBS      | 0  | 0  | 0  | 0  | 0  | 0  |
| <b>Arauca</b>             | 0  | 2  | 0  | 0  | 0  | 0  |
| <b>Amazonas</b>           | 0  | 2  | 0  | 0  | 0  | 0  |
| <b>Antioquia</b>          | 0  | 2  | 0  | 0  | 0  | 0  |
| <b>Barranquilla</b>       | 0  | 1  | 0  | 0  | 0  | 0  |
| <b>Bogotá</b>             | 0  | 1  | 0  | 0  | 0  | 0  |
| <b>Bolívar</b>            | 0  | 1  | 0  | 0  | 0  | 0  |
| <b>Buenaventura</b>       | 0  | 2  | 0  | 0  | 0  | 0  |
| <b>Cauca</b>              | 0  | 2  | 0  | 1  | 0  | 0  |
| <b>Cesar</b>              | 0  | 1  | 0  | 0  | 0  | 0  |
| <b>Chocó</b>              | 0  | 2  | 0  | 1  | 0  | 0  |
| <b>Guainía</b>            | 0  | 2  | 0  | 0  | 0  | 0  |
| <b>La Guajira</b>         | 0  | 2  | 0  | 0  | 0  | 0  |
| <b>Magdalena</b>          | 0  | 1  | 0  | 0  | 0  | 0  |
| <b>Nariño</b>             | 0  | 2  | 0  | 0  | 0  | 0  |
| <b>Necocil</b>            | 0  | 1  | 0  | 0  | 0  | 0  |
| <b>Norte de Santander</b> | 0  | 2  | 0  | 0  | 0  | 0  |
| <b>Santander</b>          | 0  | 1  | 0  | 0  | 0  | 0  |
| <b>Soacha</b>             | 0  | 1  | 0  | 0  | 0  | 0  |
| <b>Vichada</b>            | 0  | 2  | 0  | 0  | 0  | 0  |
| <b>Putamayo</b>           | 0  | 2  | 0  | 0  | 0  | 0  |
| <b>Valle del Cauca</b>    | 0  | 2  | 0  | 0  | 0  | 0  |

| <b>DEMOCRATIC REPUBLIC OF CONGO</b> | COORDINATOR |    | CO-COORDINATOR |    | IM OFFICER |    |
|-------------------------------------|-------------|----|----------------|----|------------|----|
|                                     | FT          | PT | FT             | PT | FT         | PT |
| 5 SUB-NATIONAL HUBS                 |             |    |                |    |            |    |
| <b>Sud-Kivu (Bukavu)</b>            | 0           | 1  | 0              | 0  | 1          | 0  |
| <b>Nord-Kivu (Goma)</b>             | 1           | 0  | 0              | 0  | 1          | 0  |
| <b>Tanganyika (Kalemie)</b>         | 0           | 0  | 0              | 1  | 1          | 0  |
| <b>Ituri (Bunia)</b>                | 1           | 0  | 0              | 0  | 1          | 0  |
| <b>Relais Maindombe</b>             | 0           | 0  | 0              | 0  | 1          | 0  |

| <b>ETHIOPIA</b>                              | COORDINATOR |    | CO-COORDINATOR |    | IM OFFICER |    |
|--|-------------|----|----------------|----|------------|----|
|  | FT          | PT | FT             | PT | FT         | PT |
| 6 SUB-NATIONAL HUBS                          |             |    |                |    |            |    |
| <b>Amhara</b>                                | 0           | 1  | 0              | 0  | 0          | 0  |
| <b>Gambella</b>                              | 0           | 0  | 0              | 1  | 0          | 1  |
| <b>Oromia</b>                                | 0           | 1  | 0              | 0  | 0          | 0  |
| <b>South Ethiopia, Sidama, Central Ethio</b> | 0           | 1  | 0              | 0  | 0          | 1  |
| <b>Benishangul Gumuz</b>                     | 1           | 0  | 0              | 0  | 0          | 0  |
| <b>Tigray</b>                                | 1           | 0  | 0              | 0  | 0          | 0  |

| <b>HAITI</b>                   | COORDINATOR |    | CO-COORDINATOR |    | IM OFFICER |    |
|--------------------------------|-------------|----|----------------|----|------------|----|
|                                | FT          | PT | FT             | PT | FT         | PT |
| 1 SUB-NATIONAL HUB             |             |    |                |    |            |    |
| <b>Artibonite &amp; Centre</b> | 0           | 0  | 0              | 0  | 0          | 0  |

| <b>HONDURAS</b>                   | COORDINATOR |    | CO-COORDINATOR |    | IM OFFICER |    |
|-----------------------------------|-------------|----|----------------|----|------------|----|
|                                   | FT          | PT | FT             | PT | FT         | PT |
| 3 SUB-NATIONAL HUBS               |             |    |                |    |            |    |
| <b>Cortés Sanitary Region</b>     | 0           | 0  | 0              | 0  | 0          | 0  |
| <b>El Paraíso Sanitary Region</b> | 0           | 0  | 0              | 0  | 0          | 0  |
| <b>Octepeque Sanitary Region</b>  | 0           | 0  | 0              | 0  | 0          | 0  |

| <b>MADAGASCAR</b>   | COORDINATOR |    | CO-COORDINATOR |    | IM OFFICER |    |
|---------------------|-------------|----|----------------|----|------------|----|
|                     | FT          | PT | FT             | PT | FT         | PT |
| 6 SUB-NATIONAL HUBS |             |    |                |    |            |    |
| <b>Grand Nord</b>   | 1           | 0  | 0              | 0  | 0          | 0  |
| <b>Grand Sud</b>    | 1           | 0  | 0              | 1  | 0          | 0  |

| <b>MALI</b>         | COORDINATOR |    | CO-COORDINATOR |    | IM OFFICER |    |
|---------------------|-------------|----|----------------|----|------------|----|
|                     | FT          | PT | FT             | PT | FT         | PT |
| 6 SUB-NATIONAL HUBS |             |    |                |    |            |    |
| <b>Gao</b>          | 0           | 1  | 0              | 1  | 0          | 0  |
| <b>Kidal</b>        | 0           | 1  | 0              | 1  | 0          | 0  |
| <b>Menaka</b>       | 0           | 1  | 0              | 1  | 0          | 0  |
| <b>Mopti</b>        | 0           | 1  | 0              | 1  | 0          | 0  |
| <b>Segou</b>        | 0           | 1  | 0              | 1  | 0          | 0  |
| <b>Tombouctou</b>   | 0           | 1  | 0              | 1  | 0          | 0  |



---

**MOZAMBIQUE**

1 SUB-NATIONAL HUBS

**Pemba**

| COORDINATOR |    | CO-COORDINATOR |    | IM OFFICER |    |
|-------------|----|----------------|----|------------|----|
| FT          | PT | FT             | PT | FT         | PT |
| 0           | 1  | 0              | 0  | 0          | 0  |

---

**MYANMAR**

4 SUB-NATIONAL HUBS

**North East****North West****South East****Rakhine / Southern Chin**

| COORDINATOR |    | CO-COORDINATOR |    | IM OFFICER |    |
|-------------|----|----------------|----|------------|----|
| FT          | PT | FT             | PT | FT         | PT |
| 1           | 0  | 0              | 0  | 0          | 0  |
| 0           | 0  | 0              | 0  | 0          | 0  |
| 0           | 0  | 0              | 0  | 0          | 0  |
| 1           | 0  | 0              | 0  | 0          | 0  |

---

**NIGER**

4 SUB-NATIONAL HUBS

**Diffa****Maradi****Tahoua****Tillabery**

| COORDINATOR |    | CO-COORDINATOR |    | IM OFFICER |    |
|-------------|----|----------------|----|------------|----|
| FT          | PT | FT             | PT | FT         | PT |
| 0           | 0  | 0              | 0  | 0          | 0  |
| 0           | 0  | 0              | 0  | 0          | 0  |
| 0           | 0  | 0              | 0  | 0          | 0  |
| 0           | 0  | 0              | 0  | 0          | 0  |

---

**NIGERIA**

2 SUB-NATIONAL HUBS

**Adamawa****Yobe**

| COORDINATOR |    | CO-COORDINATOR |    | IM OFFICER |    |
|-------------|----|----------------|----|------------|----|
| FT          | PT | FT             | PT | FT         | PT |
| 1           | 0  | 0              | 0  | 0          | 0  |
| 0           | 1  | 0              | 0  | 0          | 0  |

---

**Occupied Palestinian Territory**

2 SUB-NATIONAL HUBS

**Gaza Strip****The West bank**

| COORDINATOR |    | CO-COORDINATOR |    | IM OFFICER |    |
|-------------|----|----------------|----|------------|----|
| FT          | PT | FT             | PT | FT         | PT |
| 1           | 0  | 0              | 0  | 0          | 0  |
| 1           | 0  | 0              | 0  | 0          | 0  |

---

**SOMALIA**

6 SUB-NATIONAL HUBS

**Benadir****Jubaland****Galmudug-Galkayo****Hirshabelle****Puntland State****South West side**

| COORDINATOR |    | CO-COORDINATOR |    | IM OFFICER |    |
|-------------|----|----------------|----|------------|----|
| FT          | PT | FT             | PT | FT         | PT |
| 0           | 0  | 0              | 0  | 0          | 0  |
| 0           | 0  | 0              | 0  | 0          | 0  |
| 0           | 0  | 0              | 0  | 0          | 0  |
| 0           | 0  | 0              | 0  | 0          | 0  |
| 0           | 0  | 0              | 0  | 0          | 0  |
| 0           | 0  | 0              | 0  | 0          | 0  |



| <b><u>SOUTH SUDAN</u></b>      | COORDINATOR |    | CO-COORDINATOR |    | IM OFFICER |    |
|--------------------------------|-------------|----|----------------|----|------------|----|
| 10 SUB-NATIONAL HUBS           | FT          | PT | FT             | PT | FT         | PT |
| <b>Jonglei</b>                 | 1           | 0  | 0              | 0  | 0          | 0  |
| <b>Central Equatoria</b>       | 1           | 0  | 0              | 0  | 0          | 0  |
| <b>Eastern Equatoria</b>       | 1           | 0  | 0              | 0  | 0          | 0  |
| <b>Lakes</b>                   | 1           | 0  | 0              | 0  | 0          | 0  |
| <b>Northern Bahr el Ghazal</b> | 1           | 0  | 0              | 0  | 0          | 0  |
| <b>Unity</b>                   | 1           | 0  | 0              | 0  | 0          | 0  |
| <b>Upper Nile</b>              | 1           | 0  | 0              | 0  | 0          | 0  |
| <b>Warrap</b>                  | 1           | 0  | 0              | 0  | 0          | 0  |
| <b>Western Bahr el Ghazal</b>  | 1           | 0  | 0              | 0  | 0          | 0  |
| <b>Western Equatoria</b>       | 1           | 0  | 0              | 0  | 0          | 0  |

---

| <b><u>SUDAN</u></b>                       | COORDINATOR |    | CO-COORDINATOR |    | IM OFFICER |    |
|---|-------------|----|----------------|----|------------|----|
| 3 SUB-NATIONAL HUBS                       | FT          | PT | FT             | PT | FT         | PT |
| <b>Cross Border Darfur (West Sudan Hu</b> | 1           | 0  | 1              | 5  | 1          | 0  |
| <b>Western Sudan (Kassala)</b>            | 1           | 0  | 0              | 0  | 0          | 0  |
| <b>Central Sudan (Kosti)</b>              | 1           | 0  | 0              | 0  | 0          | 0  |

---

| <b><u>SYRIA - DAMASCUS</u></b> | COORDINATOR |    | CO-COORDINATOR |    | IM OFFICER |    |
|--------------------------------|-------------|----|----------------|----|------------|----|
| 5 SUB-NATIONAL HUBS            | FT          | PT | FT             | PT | FT         | PT |
| <b>Aleppo</b>                  | 0           | 1  | 0              | 0  | 0          | 1  |
| <b>Deir-ez-Zor</b>             | 0           | 1  | 0              | 0  | 0          | 0  |
| <b>Homs</b>                    | 0           | 1  | 0              | 0  | 0          | 1  |
| <b>Lattakia</b>                | 0           | 1  | 0              | 0  | 0          | 1  |
| <b>Qamishli</b>                | 0           | 0  | 0              | 0  | 0          | 0  |

---

| <b><u>UKRAINE</u></b> | COORDINATOR |    | CO-COORDINATOR |    | IM OFFICER |    |
|-----------------------|-------------|----|----------------|----|------------|----|
| 4 SUB-NATIONAL HUBS   | FT          | PT | FT             | PT | FT         | PT |
| <b>Dnipro</b>         | 1           | 0  | 0              | 0  | 0          | 0  |
| <b>Odessa</b>         | 1           | 0  | 1              | 0  | 0          | 0  |
| <b>Kharkiv</b>        | 1           | 0  | 1              | 0  | 0          | 0  |
| <b>Kyiv</b>           | 1           | 0  | 1              | 0  | 0          | 0  |

**YEMEN**

|                        | COORDINATOR |    | CO-COORDINATOR |    | IM OFFICER |    |
|------------------------|-------------|----|----------------|----|------------|----|
|                        | FT          | PT | FT             | PT | FT         | PT |
| 8 SUB-NATIONAL HUBS    |             |    |                |    |            |    |
| Aden                   | 1           | 0  | 0              | 0  | 0          | 0  |
| Al Hudaydah            | 1           | 0  | 0              | 0  | 0          | 0  |
| Al Mukalla             | 1           | 0  | 0              | 0  | 0          | 0  |
| Ibb                    | 0           | 0  | 0              | 0  | 0          | 0  |
| Mareb                  | 0           | 0  | 0              | 1  | 0          | 0  |
| Sana'a                 | 0           | 0  | 0              | 0  | 0          | 0  |
| Sa'ada                 | 1           | 0  | 0              | 0  | 0          | 0  |
| West Coast & Al Turbah | 0           | 0  | 0              | 0  | 0          | 0  |

---

**VENEZUELA**

|                     | COORDINATOR |    | CO-COORDINATOR |    | IM OFFICER |    |
|---------------------|-------------|----|----------------|----|------------|----|
|                     | FT          | PT | FT             | PT | FT         | PT |
| 5 SUB-NATIONAL HUBS |             |    |                |    |            |    |
| Amazonas            | 1           | 0  | 0              | 0  | 0          | 0  |
| Bolívar             | 1           | 0  | 0              | 0  | 0          | 0  |
| Delta Amacuro       | 1           | 0  | 0              | 0  | 0          | 0  |
| Táchira             | 1           | 0  | 0              | 0  | 0          | 0  |
| Zulia               | 1           | 0  | 0              | 0  | 0          | 0  |

